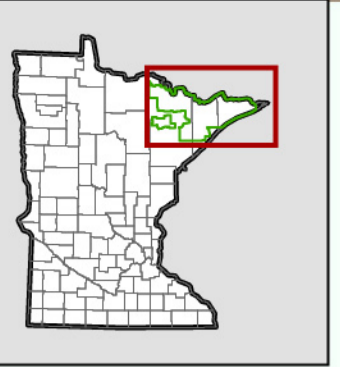


# BWCAW Land Exchange Proposal Overview



## Discovering Sustainable Revenue Sources for Minnesota Public Schools

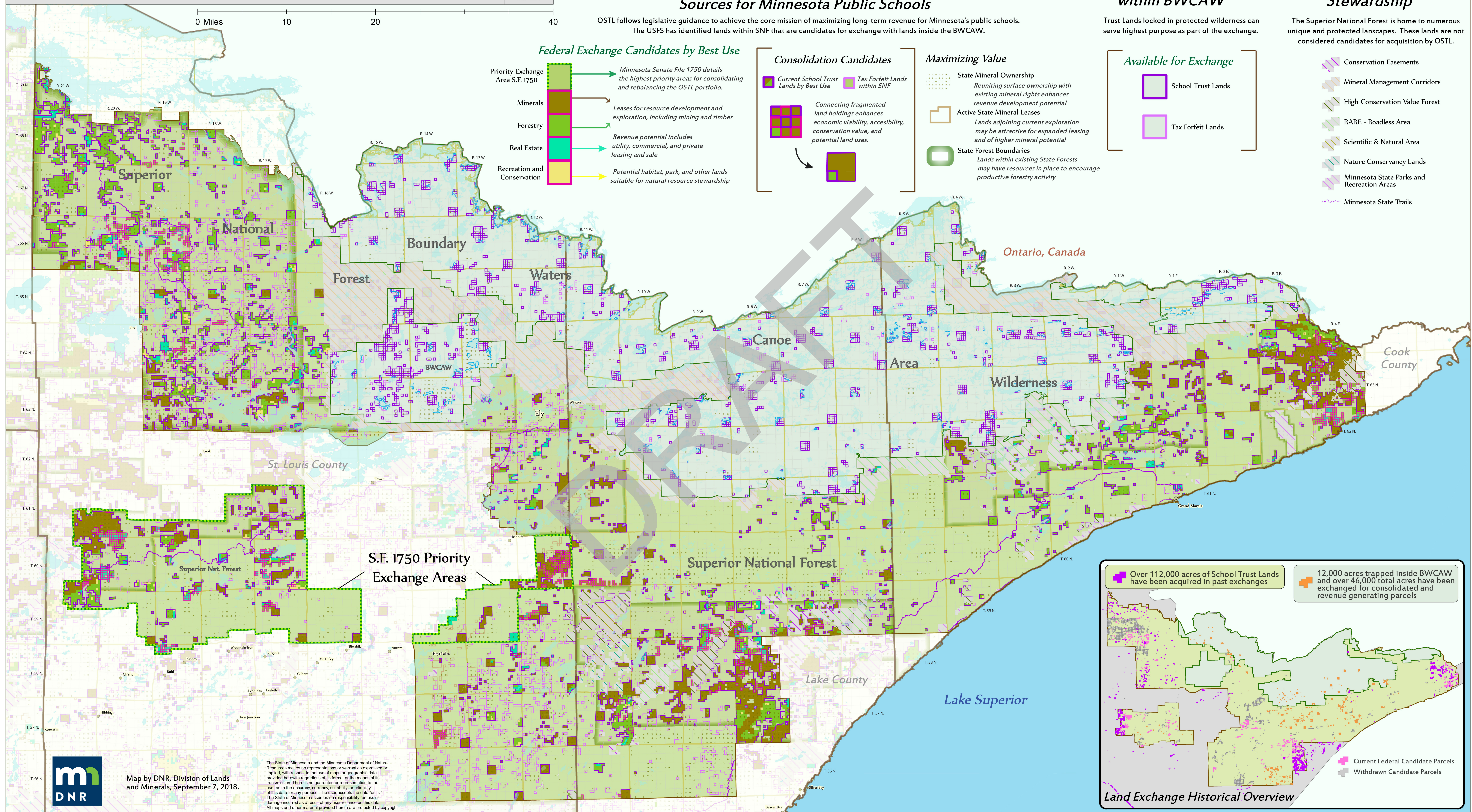
OSTL follows legislative guidance to achieve the core mission of maximizing long-term revenue for Minnesota's public schools. The USFS has identified lands within SNF that are candidates for exchange with lands inside the BWCAW.

## Exchange Candidates within BWCAW

Trust Lands locked in protected wilderness can serve highest purpose as part of the exchange.

## Strategic Resource Stewardship

The Superior National Forest is home to numerous unique and protected landscapes. These lands are not considered candidates for acquisition by OSTL.



### Federal Exchange Candidates by Best Use

- Priority Exchange Area S.F. 1750** (Green outline)
- Minerals** (Dark Green): Minnesota Senate File 1750 details the highest priority areas for consolidating and rebalancing the OSTL portfolio.
- Forestry** (Light Green): Leases for resource development and exploration, including mining and timber.
- Real Estate** (Cyan): Revenue potential includes utility, commercial, and private leasing and sale.
- Recreation and Conservation** (Yellow): Potential habitat, park, and other lands suitable for natural resource stewardship.

### Consolidation Candidates

- Current School Trust Lands by Best Use** (Purple squares)
  - Tax Forfeit Lands within SNF** (Light Purple squares)
- Connecting fragmented land holdings enhances economic viability, accessibility, conservation value, and potential land uses.

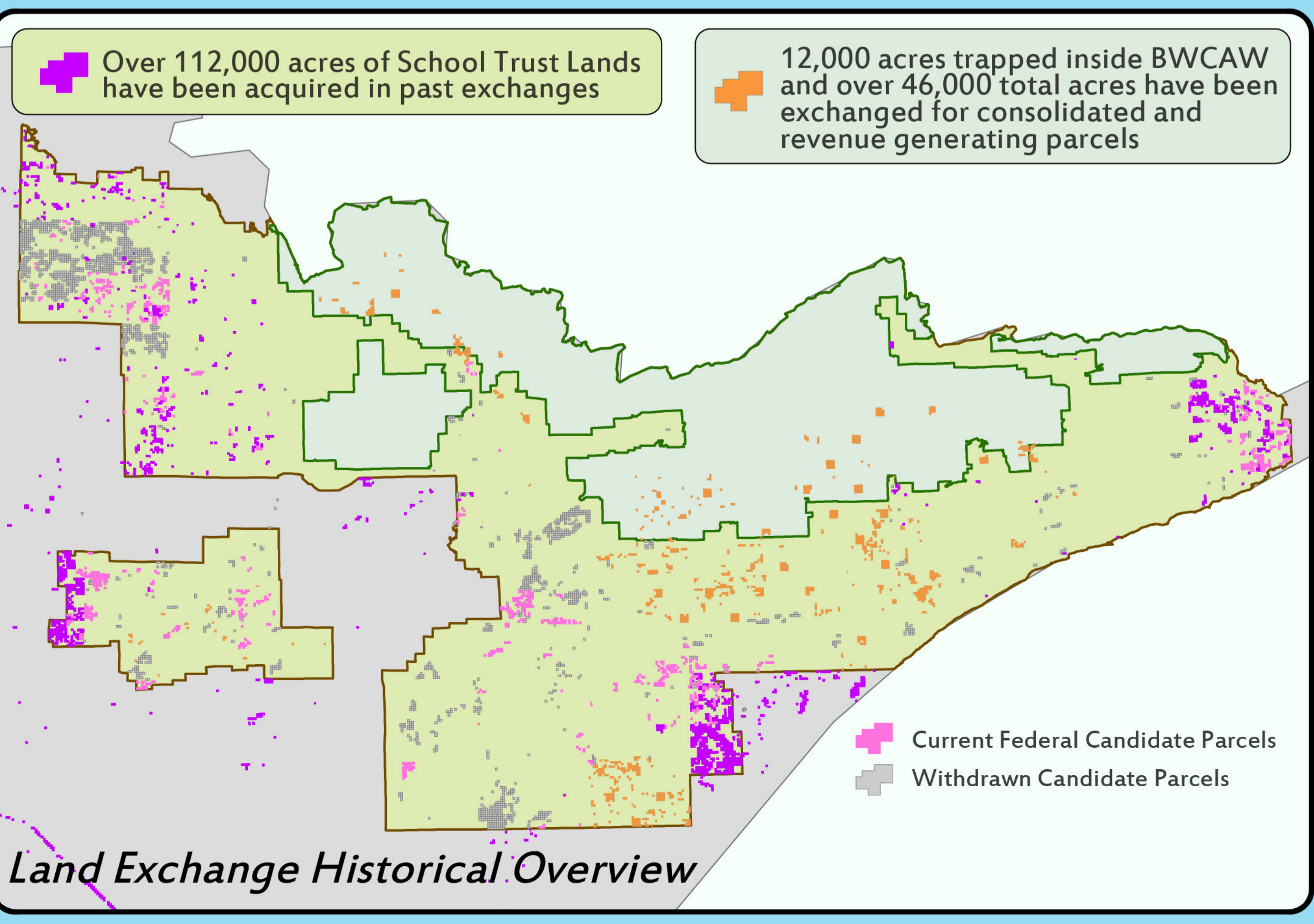
### Maximizing Value

- State Mineral Ownership** (Dotted pattern): Reuniting surface ownership with existing mineral rights enhances revenue development potential.
- Active State Mineral Leases** (Orange outline): Lands adjoining current exploration may be attractive for expanded leasing and of higher mineral potential.
- State Forest Boundaries** (Green outline): Lands within existing State Forests may have resources in place to encourage productive forestry activity.

### Available for Exchange

- School Trust Lands** (Purple square)
- Tax Forfeit Lands** (Light Purple square)

- Conservation Easements
- Mineral Management Corridors
- High Conservation Value Forest
- RARE - Roadless Area
- Scientific & Natural Area
- Nature Conservancy Lands
- Minnesota State Parks and Recreation Areas
- Minnesota State Trails



Map by DNR, Division of Lands and Minerals, September 7, 2018.

The State of Minnesota and the Minnesota Department of Natural Resources makes no representations or warranties expressed or implied, with respect to the use of maps or geographic data provided herewith regardless of its format or the means of its transmission. There is no guarantee or representation to the user as to the accuracy, currency, suitability, or reliability of this data for any purpose. The user accepts the data "as is." The State of Minnesota assumes no responsibility for loss or damage incurred as a result of any user reliance on this data. All maps and other material provided herein are protected by copyright.